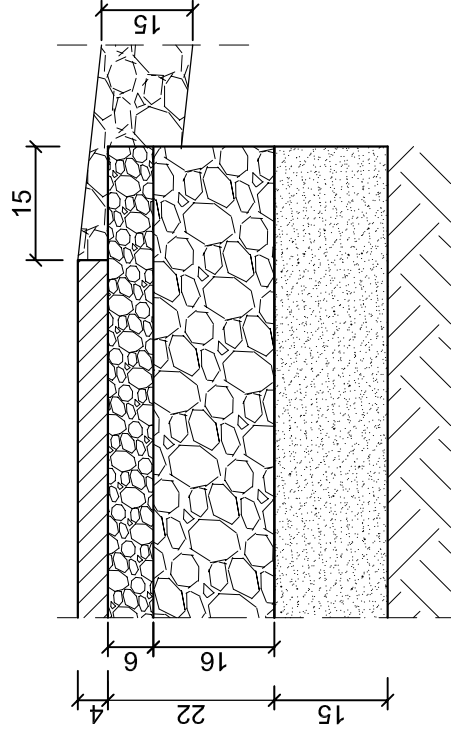


Technical cross-section drawing of a road structure. The drawing shows a road with a 2% cross-slope, a 0.5m wide extension for drainage, and a 15cm high curb. The road surface is composed of layers 15, 16, and 17. A detail 'A' shows a 7% slope and a 0.15m offset. The drawing is labeled 'JEZDNIA' and 'SzczeGól A'. A note indicates the use of a 15cm thick concrete drainage layer.

PRZEKRÓJ NORMALNY
SKALA 1:50

Nr rys. 4.1